

Lesson 3 - Installation

Installing MySql:

Run the setup file of the MySQL Server 5.1 from the subdirectory where it has been saved. When the start screen appears, click Next as shown in Diagram 1.

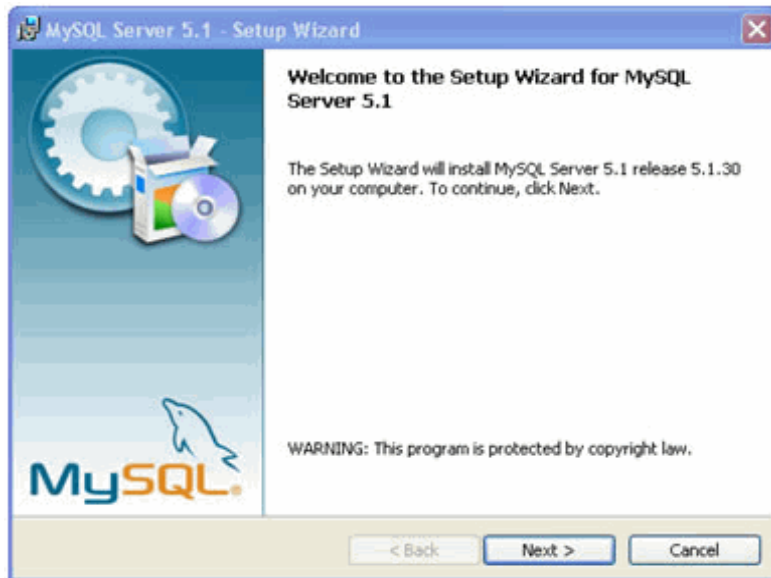


Diagram1

Select the Setup Type as **Typical** and Click Next as shown in Diagram 2.

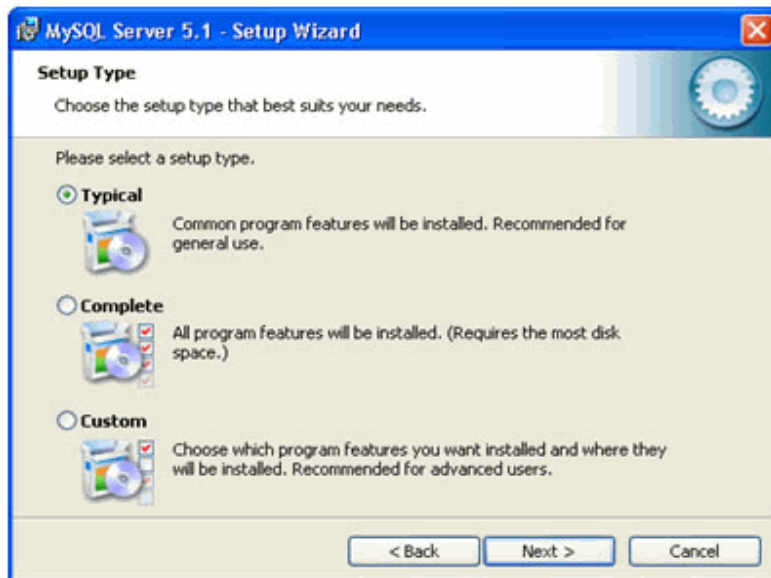


Diagram2

The screen displayed will show the path to where MySQL is being installed as shown in Diagram 3.

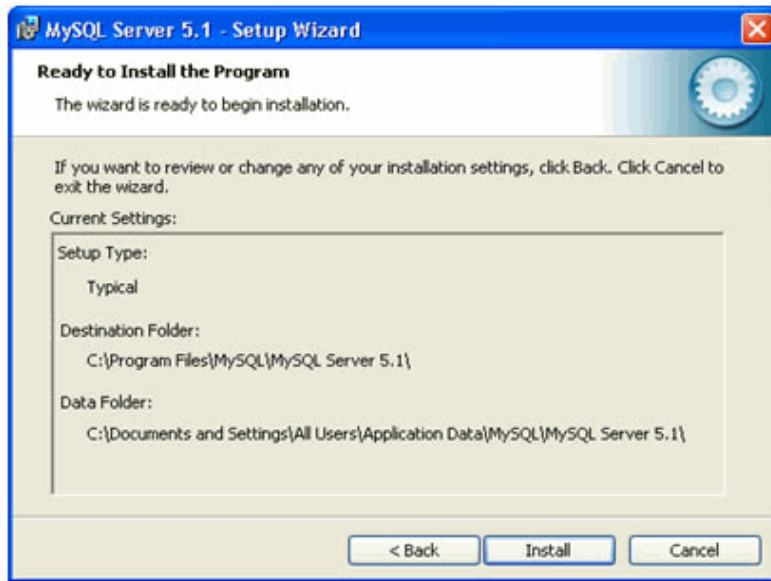


Diagram3

Click **Install** and the install process will commence as shown in Diagram 4.

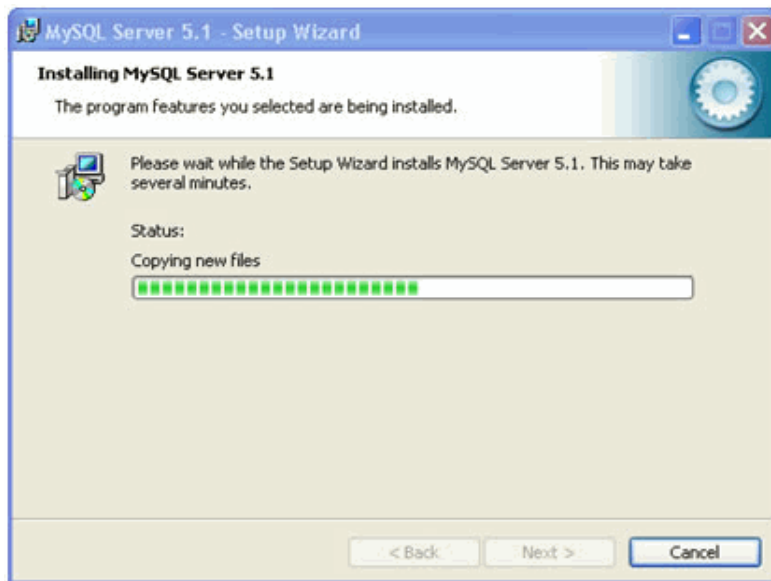


Diagram4

The following two screens will be displayed which are of little significance in the installation process. When they are displayed simply click Next as shown in Diagram 5 and Diagram 6.



Diagram5



Diagram6

The installation of MySQL enterprise server is complete as shown in Diagram 7.

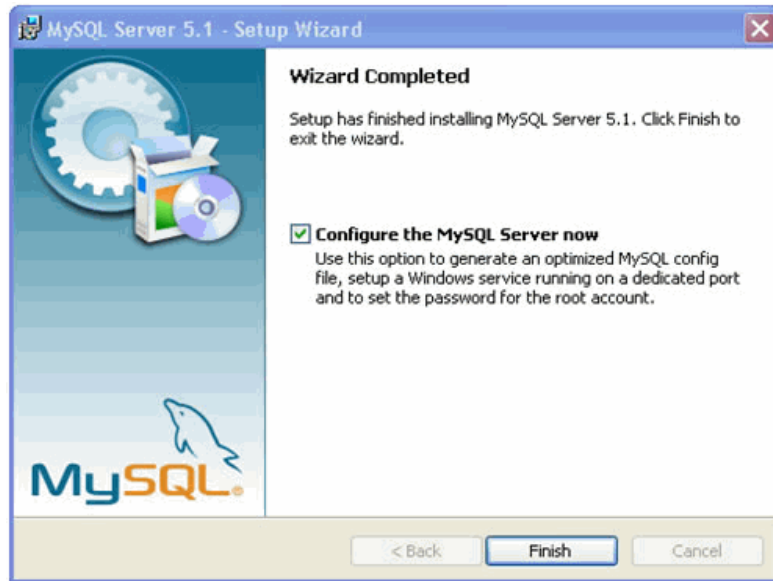


Diagram7

Configuring MySQL Enterprise Server

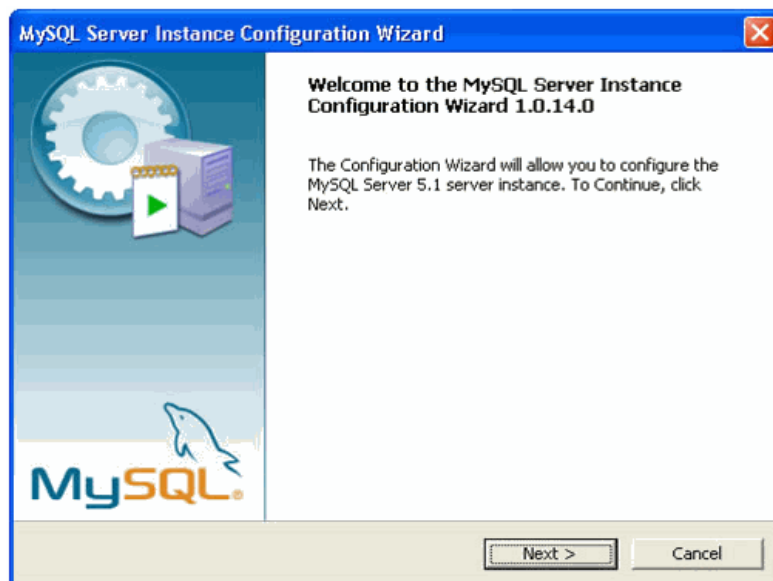


Diagram8

MySQL Server Instance Configuration. Select **Standard Configuration** as shown in Diagram 9.

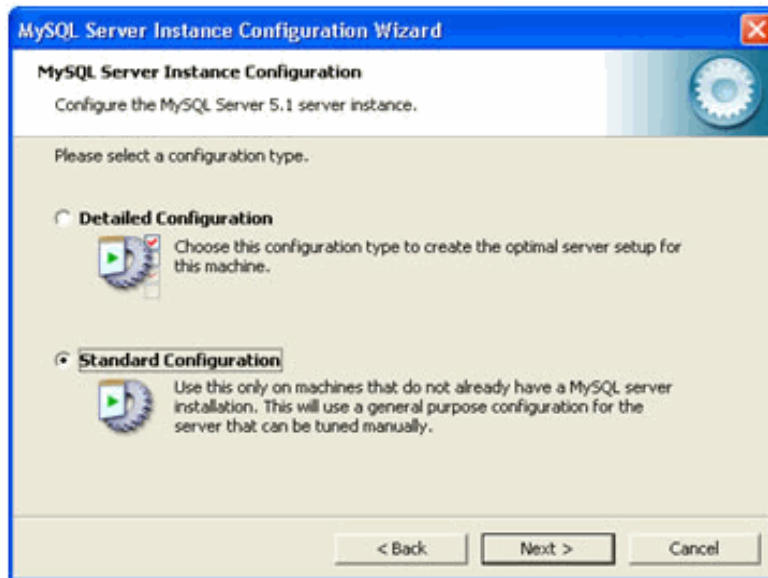


Diagram9

Install MySQL as a Windows service and give it a name. MySQL is the default as shown in Diagram 10.



Diagram10

When MySQL Server is installed for the first time:

Enter the New Root Password and Confirm this password once again in the textbox immediately below.

New Root Password: ????????? (your choice)

Confirm: ????????? (your choice)

Check the checkbox of Enable root access from remote machines.

Check the checkbox of Create Anonymous Account.

After doing the above, click Next. Be a bit patient the MySQL automatic configuration process will commence and complete as shown in Diagram 11.

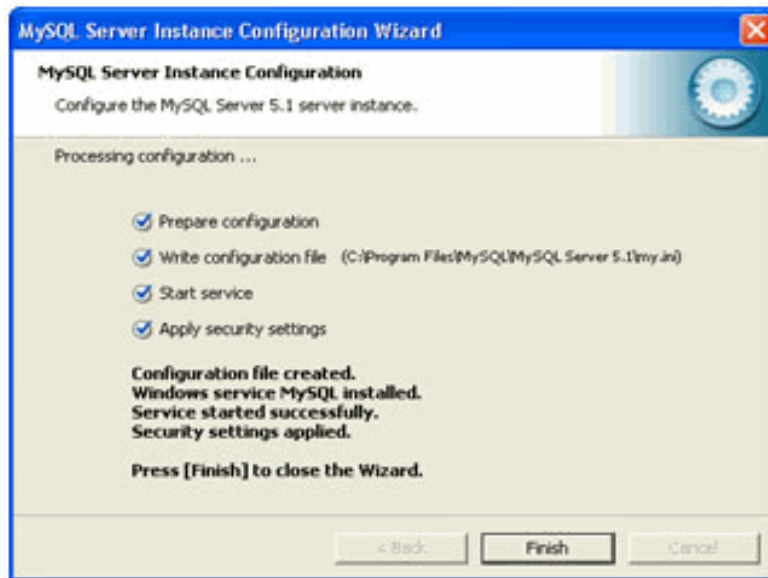


Diagram11

Testing MySQL

When MySQL has been installed and configured

At the desktop Click > Start > Run and in the run textbox enter the command **cmd**

This opens a **Command Window** with a Command Prompt visible

At the Command Prompt enter the following **mysql -u root -p{use any password here greater than 8 characters}**

Do not forget the **single space** between -u and root

The Command Prompt immediately changes to **mysql**

This indicates that that MySQL, character based client, has loaded into memory and is awaiting your command